

MTL 1-PHASE SAFETY TRANSFORMER

P: 25VA IN: 230/400VAC +/- 15VAC OUT: 2x24VAC

Art.Nr.: 86450

Vikt: 1,100 kg

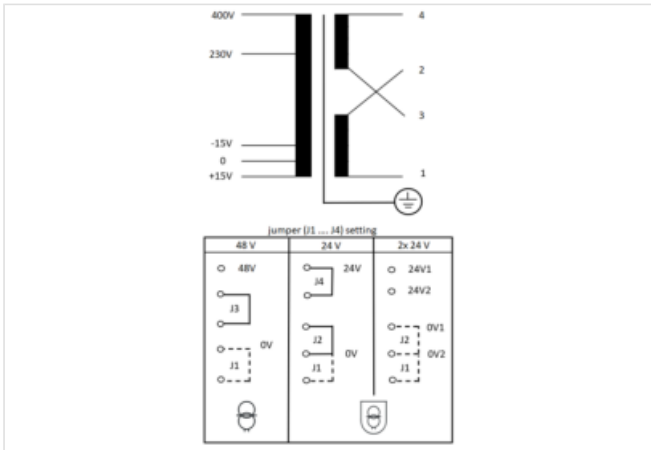
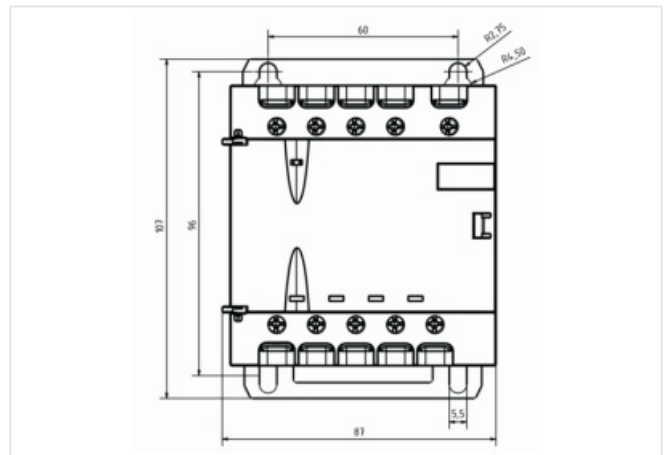
Tillverknings land: CZ

Modellbeteckning: MTL 0025-230-400+-15V/2x24

The MTL series comprises single-phase safety transformers/isolating transformers of the protection class I and protection degree IP20 with double insulation between the primary and secondary windings for general use in industrial applications.

Länk till produkt

Illustration



Produkten kan skilja sig från bilden



Kommersiella uppgifter

URL Webshop	https://shop.murrelektronik.com/86450
GTIN	4048879078351
Customs tariff number	85043180
ECLASS-6.0	27031302

ECLASS-6.1	27031302
ECLASS-7.0	27031302
ECLASS-7.1	27031302
ECLASS-8.0	27031302
ECLASS-8.1	27031302
ECLASS-9.0	27031302
ECLASS-9.1	27031302
ECLASS-10.0.1	27031302
ECLASS-10.1	27031302
ECLASS-11.0	27031302
ECLASS-11.1	27031302
ECLASS-12.0	27031302
ECLASS-13.0	27031302
ECLASS-14.0	27031302
ETIM-5.0	EC002486
ETIM-6.0	EC002486
ETIM-7.0	EC002486
ETIM-8.0	EC002486
EAN	4048879078351
Förpackningsenhet	1
Kundens tullnummer	85043180

Electrical data | Supply

Power frequency	50/60 Hz
-----------------	----------

Electrical data | Input

Nominal input voltage AC	230 V ... 400 V
Nominal current AC	0.18 A @ 230 V, 0.1 A @ 400 V
Inrush current at input voltage 1	2,6 A
Inrush current at input voltage 2	1,5 A
Short-circuit current at input voltage 1	1,3 A
Short-circuit current at input voltage 2	0,75 A

Electrical data | Output

Utgångsspänning	1 × 24 / 1 × 48 / 2 × 24 V AC
Output voltage AC 1	48 V
Output voltage AC 2	24 V

Mechanical data | Mounting data

Height	107 mm
Width	87 mm
Depth	97 mm
Monteringsmetod	geschnappt
Suitable for mounting type	(EN 60715), Keyhole mounting, Mounting rail TH35-15
Mounting dimension a	96 mm
Mounting dimension b	60 mm
Mounting dimension c	2,75 mm
Diameter bore	2,75 mm

Environmental characteristics | Climatic

Operating temperature min.	-20 °C
Operating temperature max.	60 °C
Ambient temperature (operation)	-20 °C ... 60 °C
Ambient temperature (storage, transport)	-30 °C ... 80 °C

Conformity

Product standard	EN IEC 61558-2-4, EN IEC 61558-2-6, EN IEC 62041, EN IEC 61558-1
------------------	--

Connection type 2

Family construction form	terminal
Antal poler	5
Gender	female
Anslutning	Screw terminals SK
PIN 1	+ 15 V
PIN 3	- 15 V
PIN 4	230 V
PIN 5	400 V
Family construction form	terminal
Antal poler	5
Gender	female
Anslutning	Screw terminals SK
PIN 1	PE
PIN 2	1
PIN 3	2
PIN 4	3
PIN 5	4